

DUKE UNIVERSITY MOTORSPORTS



2026 SPONSOR HANDBOOK



Contents

<i>About Us</i>	<i>3</i>
<i>Team Structure</i>	<i>4</i>
<i>Season Goals</i>	<i>5</i>
<i>Why Support Us</i>	<i>6</i>
<i>Sponsorship</i>	<i>7</i>
<i>2025 Sponsors</i>	<i>8</i>
<i>Contact Us</i>	<i>9</i>

About Formula SAE

The Formula SAE (FSAE) program, organized by SAE International, is an annual engineering competition that gives University teams around the world a simple prompt: *build the fastest formula-style racecar possible within the rulebook*.

Teams spend thousands of work-hours over a full calendar year designing, building, and testing their cars from the ground up before bringing them to Michigan International Speedway each May to compete. The competition itself is composed of static and dynamic events judged by industry experts, allowing students to showcase their engineering know-how, market analysis, and speed on track.

Competition Breakdown

Static Events



Cost
Analysis



Business
Presentation



Engineering
Design

Dynamic Events



Acceleration



Skid Pad



Autocross



Endurance



Fuel
Efficiency

Who Are We?

Duke University Motorsports is more than just an FSAE team – we are a group of aspiring engineers committed to providing the most *practical, hands-on, and rewarding experience on campus* to our team members. We come from various backgrounds and levels of expertise, but we're united by our goal and love for racing.

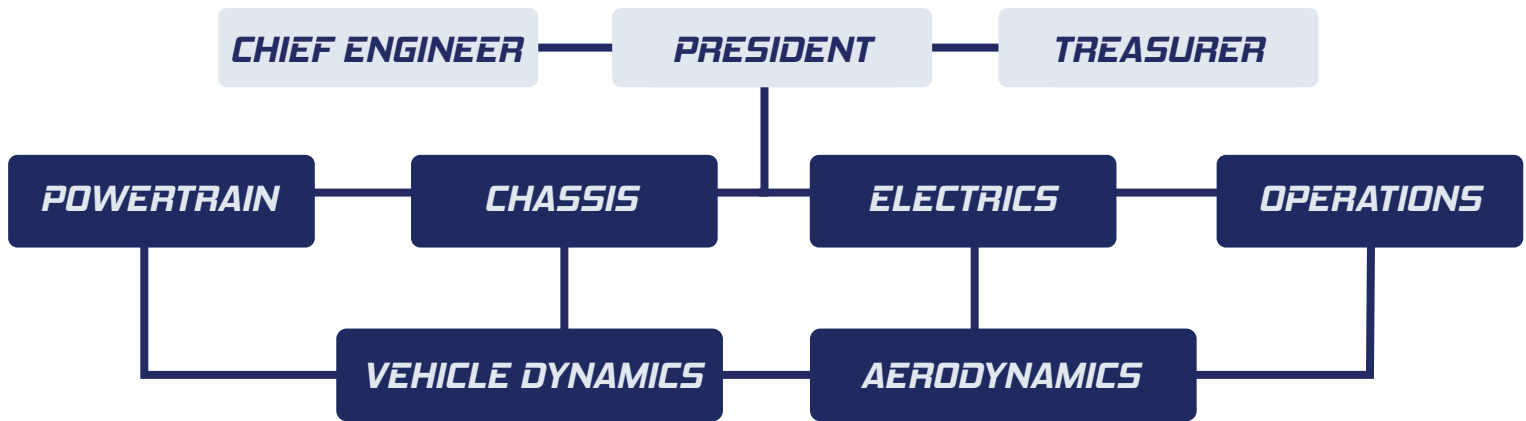
From day one, our engineers spend time in the garage, computer lab, machine shop, and our testing lot developing our car, picking up invaluable technical, time management, and interpersonal skills along the way – no prior experience necessary! On top of competing throughout the year, we are involved in student activity fairs, showcases, and volunteering efforts within the Duke and Durham, NC community, striving to *represent our university at the highest level*.



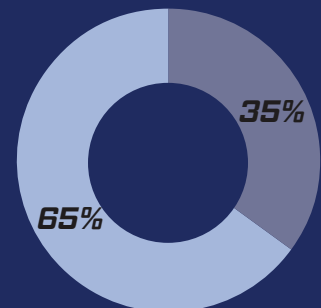
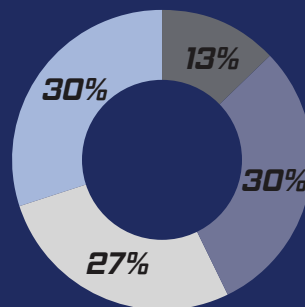
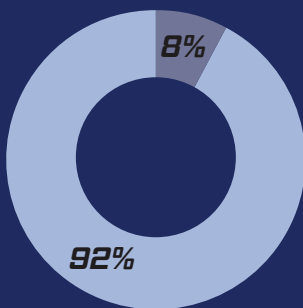
Team Structure

Our organization is managed by our executive team: the President, Chief Engineer, and Treasurer. Design and manufacturing work is split amongst *six vehicle subsystems*, each made up of 5-15 team members with expertise in a certain area of the car.

While members generally gravitate towards one or two subsystems, our leadership emphasizes inter-subsystem collaboration as much as possible, so every member has the opportunity to be involved in work they are excited about.



Team Breakdown



SCHOOL

- Pratt School of Engineering
- Trinity College of Arts and Sciences

CLASS YEAR

- First Years
- Sophomore
- Junior
- Senior

GENDER

- Male
- Female

2025 Season Achievements

Duke Motorsports has continued on its upward trajectory this season. In 2025, the team focused on a back-to-basics approach, ensuring every design decision was rooted in building a reliable vehicle. After a year of hard work in the garage, computer lab, and testing track, our team surpassed our season goals and emerged as a top finisher.

2025 FSAE Michigan by the Numbers:

- 16th place overall out of 109 competing teams
- 3rd best finish in team history
- 669.1 points scored – most in recorded team history
- 13th place in the Endurance Event
- 1st Endurance Event finish in 7 years
- 2nd place in the Business Presentation Event

2026 Season Goals

In 2026, the team is eager to build on this success, aiming for 715 points in Michigan. This corresponds to the **top finish place** in the 30-year history of Duke Motorsports.

To accomplish this, the team is united under three central goals for the season:

- **Build from the ground up** – ensure all designs are rooted in solid engineering fundamentals
- **Close the loop** – test and validate our car, comparing models to manufactured parts
- **Push the needle** – build on the success of the 2025 season and chase the remaining 10% of untapped performance





Our reach extends far beyond the walls of campus – our engineers go on to succeed in the classroom, the workplace, and their personal lives in a large part due to the lessons they learned on the team, made possible by donations like yours. *Your support will go towards:*

- We thank you for your consideration – Let's go Duke!*

Sponsorship

Although Duke University and the Pratt School of Engineering provides us with resources to build our vehicle, we also rely on the help of corporate sponsors and individual donations to reach our goals. We welcome monetary sponsorships as well as product or service donations.

Partner Tiers

Bronze: \$500+

- Name on Duke Motorsports Website
- Social media post
- Access to team newsletters
- Small logo on competition vehicle

Silver: \$1,500+

- All bronze perks, plus:
- Logo on the Duke Motorsports website
- Medium logo on competition vehicle

Gold: \$5,000+

- All silver perks, plus:
- Access to the team resume book
- Invitation to vehicle roll out

Platinum: \$10,000+

- All gold perks, plus:
- Team apparel
- Invitation to campus test sessions

Blue Devil \$25,000+

- All platinum perks, plus:
- Invitation to FSAE Michigan
- Extra large logo in a primary location on competition vehicle

How to Donate

Thank you so much for considering a donation towards Duke University Motorsports. There are two possible ways to support us.

All donations are **501(c)(3) tax deductible** through the Pratt School of Engineering.

Via Check

- Checks must be made out to **Duke University**, and the memo line should specify **"Duke University Motorsports"**
- Checks mailed to :

Duke University
110 Science Drive, Box 90271
Durham, NC 27708

Online Donation Form

- Visit gifts.duke.edu
- Click "Search for an area" and enter "Pratt Formula SAE Care Team Fund"
- Enter gift amount and continue to payment

2025 Sponsors

BLUE DEVIL

Duke | ENGINEERING
ALUMNI ASSOCIATION



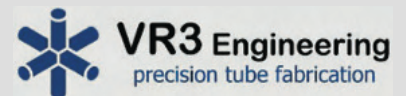
PLATINUM



GOLD



SILVER



BRONZE



Contact Us

Sara Canale | President

- sara.canale@duke.edu
- (919) 397 - 5352

Ritwik Bhattacharjee | Chief Engineer

- ritwik.bhattacharjee@duke.edu
- (720) 518 - 6353

Nikhil Kanthan | Treasurer

- nikhil.kanthan@duke.edu
- (646) 683 - 2078

Harika Amineni | Operations Lead

- harika.amineni@duke.edu
- (949) 672 - 8376

✉ dukeuniversitymotorsports@gmail.com

📍 100 Science Drive
Hudson Hall Room 144
Durham, NC, 27708

🌐 Duke University Motorsports

📷 @DukeFSAE

✉ @DukeFSAE

📺 @DukeMotorsports

🌐 dukefsae.com

To learn more about us, read our blog,
and view our photo galleries, please visit our
website: dukefsae.com.

Please reach out to our team email or our
leadership directly with any inquiries! We
look forward to hearing from you.

